

Company Overview

(Type of Business)

1. Planning, land survey, design, superintendence and consulting services for construction works
2. Planning, land survey, design, superintendence and consulting services for contract work of regional/urban development
3. Investigation and consulting business related to collection, transportation, treatment, recycle and environmental concerns on general waste and industrial waste, as well as removal polluted air, water and soil
4. Residential business and real estate business
5. Manufacturing, selling and rental for machinery facilities, equipment, materials and machines for construction
6. Iron works
7. Management and leasing services for restaurants, entertainment facilities for zoo, botanical gardens, amusement park, play park, or sport facilities for racing park, golf courses, tennis courts, also accommodation such as hotel and Japanese traditional hotels
8. Sales of machinery and equipment for medical uses
9. Planning, design, construction, ownership, administration, maintenance, operation for public facility, such as water and sewage, government office building, public facility for education and culture, industrial waste disposal facility
10. Management for nursing home for the elderly, and related consulting services
11. Generation, supply, distribution of electricity, and related consulting services
12. Services related to the above business

(Permission)

Construction Permit No. :
Minister of land, Infrastructure and Transport Permit
(TOKU - 28) No. 410

(Building Lots and Buildings Transaction Business License)

Minister of Land, Infrastructure and Transport License
(13) No. 1751

(Registration)

Senior Registered Architect Office: Registration No.500
by Governor of Tokyo
Survey Company Registration: Registration No.(3) - 32013
Construction Consultant Registration: Construction 30 - 1116
ZEB Planner Registration No.: ZEB2020P - 00045 - PG
ISO9001 : MSA-QS-3580
ISO14001 : MSA-ES-165
ISO55001 : MSA-AS-30

(Paid up Capital) 3 billion Yen

(Foundation) 1862

(Establish) 20th July 1931

(Head Office) 4-12-19 Nihonbashi Honcho, Chuo-ku, Tokyo

(Registered Head Office)
1-11 Sakuragicho, Toyama, Toyama prefecture

(Representative)

President & Representative Director Masafumi Miyamoto

(Number of Employee) 1,208 (April 2021)

(Holders of Main Qualification)

Ph.D. in Engineering : 7
Professional Engineers : 75
First-Class Civil Engineering Work
Execution Managing Engineers : 449
First-Class Architects : 195
First-Class Building Operation and
Management Engineers : 398

Executive

(Director and Auditor)

Chairman & Director	KAWADA Shinichi
President & Representative Director	MIYAMOTO Masafumi
Representative Director	HEIMA Hiroshi
Director	ITO Takami
Director	NANBU Masaru
Director	KANEKO Yoshinori
Director	KATSUYAMA Masaaki
Director (Part-time)	WATANABE Satoru
Director (Part-time)	MATSUZAKI Hiroyuki
Director (Part-time)	IWASAKI Yuji
Standing Statutory Auditor	SATO Yuichi
Auditor	MIYATA Kensaku
Auditor	NUMADA Masahiro

(Executive Officer) ※Concurrently as Director

※ President & Executive Officer	MIYAMOTO Masafumi
※ Senior Executive Officer	HEIMA Hiroshi
※ Senior Executive Officer	ITO Takami
Senior Executive Officer	KUGIMIYA Junji
Senior Executive Officer	UMEHARA Yoshio
※ Managing Executive Officer	NANBU Masaru
Managing Executive Officer	KOJIMA Shinichi
Managing Executive Officer	FUYA Takashi
Managing Executive Officer	KANEKO Masahito
Managing Executive Officer	KAWABATA Kazunori
※ Executive Officer	KANEKO Yoshinori
※ Executive Officer	KATSUYAMA Masaaki
Executive Officer	ICHIKAWA Yoshihiro
Executive Officer	INADA Kozo
Executive Officer	TOKIME Yuichi
Executive Officer	ICHIHARA Hiroshi
Executive Officer	CHIBA Mitiya
Executive Officer	TAKAHASHI Tatsuo
Executive Officer	WAKITA Kazuhisa
Executive Officer	SHIOZAKI Takaaki
Executive Officer	NAKAMURA Toyohiko
Executive Officer	MIYAZAWA Takehisa
Executive Officer	SHOJI Keizo
Executive Officer	HIROHASHI Wataru
Executive Officer	YAMAMOTO Toru
Executive Officer	FUJII Hitoshi
Executive Officer	KUWABARA Tsugushi

Affiliated Companies

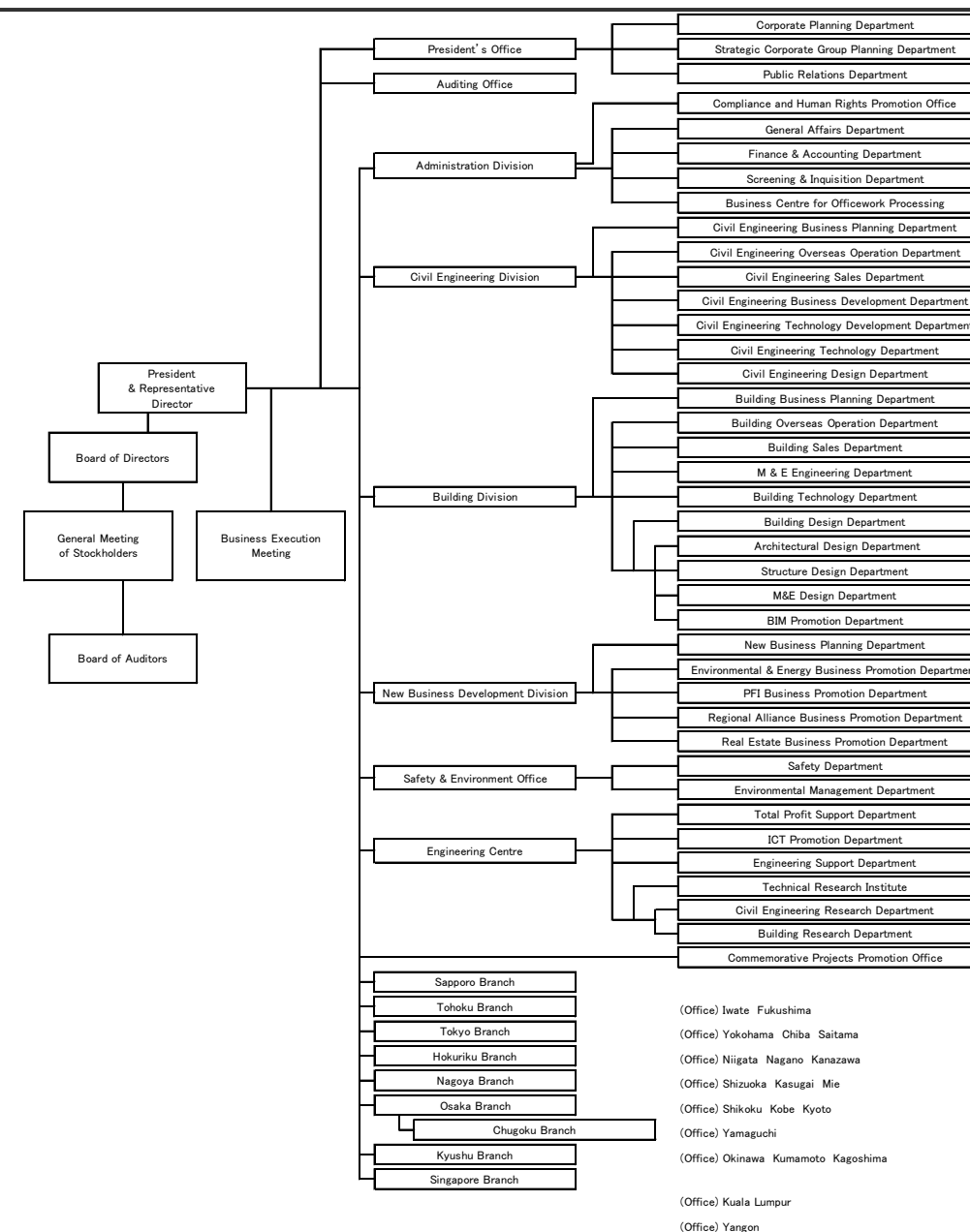
Kenpan Co., Ltd. /Insurance agent
4-5-12 Hongoku-cho, Nihonbashi, Chuo-ku, Tokyo
〒103-0021 TEL: 03-3270-2163

SK creed Co., Ltd. / Construction, Architecture and Reform,
Sales, Leasing and brokerage Real Estate
3-8-16 Iwamotocho, Chiyoda-ku, Tokyo
〒101-0032 TEL: 03-5822-7021

Star General Contractor Co., Ltd. / Architecture and Reform,
Civil Engineering, Construction of Machinery, others
1-11 Sakuragicho, Toyama, Toyama Prefecture
〒930-0082 TEL: 076-431-5571

(Overseas Subsidiary)
Sato Kogyo (S) Pte. Ltd. (SINGAPORE)
Sato Kogyo (M) Sdn. Bhd. (MALAYSIA)
Sato Kogyo Bangkok Co., Ltd. (THAILAND)
Sato Kogyo (CAMBODIA) Co., Ltd. (CAMBODIA)

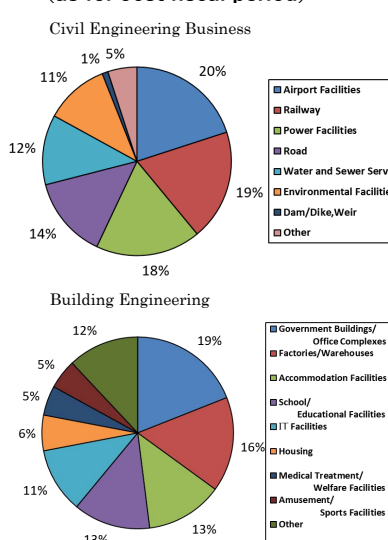
Company Organization



Performance

FY		FY 86	FY 87	FY 88	FY 89	FY 90
Period	From	2015. 07. 01	2016. 07. 01	2017. 07. 01	2018. 07. 01	2019. 07. 01
	To	2016. 06. 30	2017. 06. 30	2018. 06. 30	2019. 06. 30	2020. 06. 30
Secured Orders		142, 189	131, 010	166, 202	170, 875	120, 663
Revenue		131, 687	133, 377	125, 575	139, 350	139, 623
Operating Profit		634	2, 158	3, 480	3, 186	2, 811
Ordinary Profit		532	2, 468	3, 670	3, 544	3, 551
Profit and Loss for the period		291	1, 588	3, 531	2, 289	4, 032
Orders carried forward		205, 925	203, 559	244, 186	275, 711	256, 751

Percentage of Orders by Business (as for 90st fiscal period)



Offices

(Head Office)

Head Office / 4-12-19 Nihonbashi Honcho, Chuo-ku, Tokyo
〒103-8639 TEL: 03-3661-0502

Technical Research Institute / 14-10 Aoyama Morinosato, Atsugi
〒243-0123 TEL: 046-270-3091

(Sapporo Branch)

Sapporo Branch / Nishi 3-19-1, Kita 9-Jo, Kita-ku, Sapporo
〒060-0809 TEL: 011-707-7531

(Tohoku Branch)

Tohoku Branch / 1-10-3 Hon-cho, Aoba-ku, Sendai
〒980-0014 TEL: 022-265-1670

Iwate Office / 4-28 Kaiunbashi-dori, Morioka
〒020-0026 TEL: 019-681-3501

Fukushima Office / 1-16-25 Noda-cho, Fukushima
〒960-8055 TEL: 024-534-1668

(Tokyo Branch)

Tokyo Branch / 4-12-19 Nihonbashi Honcho, Chuo-ku, Tokyo
〒103-0023 TEL: 03-3661-5666

Yokohama Office / 3-39 Onoe-cho, Naka-ku, Yokohama
〒231-0015 TEL: 045-664-8100

Chiba Office / 1-10-10 Matsunami, Chuou-ku, Chiba
〒260-0044 TEL: 043-255-1116

Saitama Office / 2-12-12 Takasago, Urawa-ku, Saitama
〒330-0063 TEL: 048-823-9167

(Hokuriku Branch)

Hokuriku Branch / 1-11 Sakuragi-cho, Toyama
〒930-8515 TEL: 076-431-6531

Niigata Office / 1-1-24 Kamitokoro, Chuo-ku, Niigata
〒950-0994 TEL: 025-245-3103

Nagano Office / 1-16-18 Nakagosho, Nagano
〒380-0935 TEL: 026-226-1593

Kanazawa Office / 1-1-3 Sainen, Kanazawa
〒920-0024 TEL: 076-263-0371

(Nagoya Branch)

Nagoya Branch / 1-2-3 Izumi, Higashi-ku, Nagoya
〒461-8512 TEL: 052-962-7281

Shizuoka Office / 1-15-21 Nakada, Suruga-ku, Shizuoka
〒422-8041 TEL: 054-654-6697

Kasugai Office / 1-4 Matsushin-cho, Kasugai
〒486-0931 TEL: 0568-35-5078

Mie Office / 1-8-2 Shiohama Honmachi, Yokkaichi
〒510-0854 TEL: 059-347-1220

(Osaka Branch)

Osaka Branch / 1-1-6 Kitahama, Chuo-ku, Osaka
〒541-0041 TEL: 06-6203-7221

Shikoku Office / 1-12-12 Matsushima-cho, Takamatsu
〒760-0068 TEL: 087-835-2351

Kobe Office / 119 Itomachi, Chuo-ku, Kobe
〒650-0032 TEL: 078-333-8311

Kyoto Office / 181 Kitamachi, Roku-jo agaru,
Karasuma-dori, Shimogyo-ku, Kyoto
〒600-8176 TEL: 075-341-1050

(Chugoku Branch)

Chugoku Branch / 1-1-23 Otemachi, Naka-ku, Hiroshima
〒730-0051 TEL: 082-241-2201

Yamaguchi Office / 5-8-20 Marifu-machi, Iwakuni
〒741-0018 TEL: 0827-28-5450

(Kyushu Branch)

Kyushu Branch / 1-17-1 Chiyo, Hakata-ku, Fukuoka
〒812-0044 TEL: 092-645-1621

Okinawa Office / 2-21-3 Izumizaki, Naha
〒900-0021 TEL: 098-855-8006

Kumamoto Office / 6-50-25 Suizenji, Chuo-ku, Kumamoto
〒862-0950 TEL: 096-237-7752

Kagoshima Office / 8-13 Hirano-cho, Kagoshima
〒892-0848 TEL: 099-226-1583

(Overseas Branch Office)

Singapore Branch / 149 Rochor Road, #04-14/15,
Fu Lu Shou Complex, Singapore 188425
TEL: +65-6336-7333

Kuala Lumpur Office / 405, Level 4, Uptown 2.2, Jalan SS
21/37, Damansara Uptown 47400
Petaling Jaya, Selangor Darul
Ehsan, Malaysia
TEL: +60-3-7728-8000

Yangon Office / #1206 12th Floor, SAKURA TOWER
No.339, Bogyoke Aung San Rd,
Kyauktada T/S, Yangon, Myanmar
TEL: +95(0)1-255-393



SATO KOGYO CO.,LTD.

SATO KOGYO COMPANY PROFILE